



Located in the heart of the Cotswolds, and nestled within its own private garden on Marley Lake, this luxurious cabin is a stunning retreat away from the city, where a tranquil setting and abundant open space provides the perfect weekend getaway. With a dedicated waterside deck and open plan design, the cabins are an ideal accommodation for young families and couples.

The two bedroom cabin is offered fully furnished, with interiors designed by YOO Studio, featuring a double-height open plan living and dining space, two double bedrooms, two bathrooms and a spacious outdoor entertaining deck, with large retractable doors that truly bring the outdoors inside.

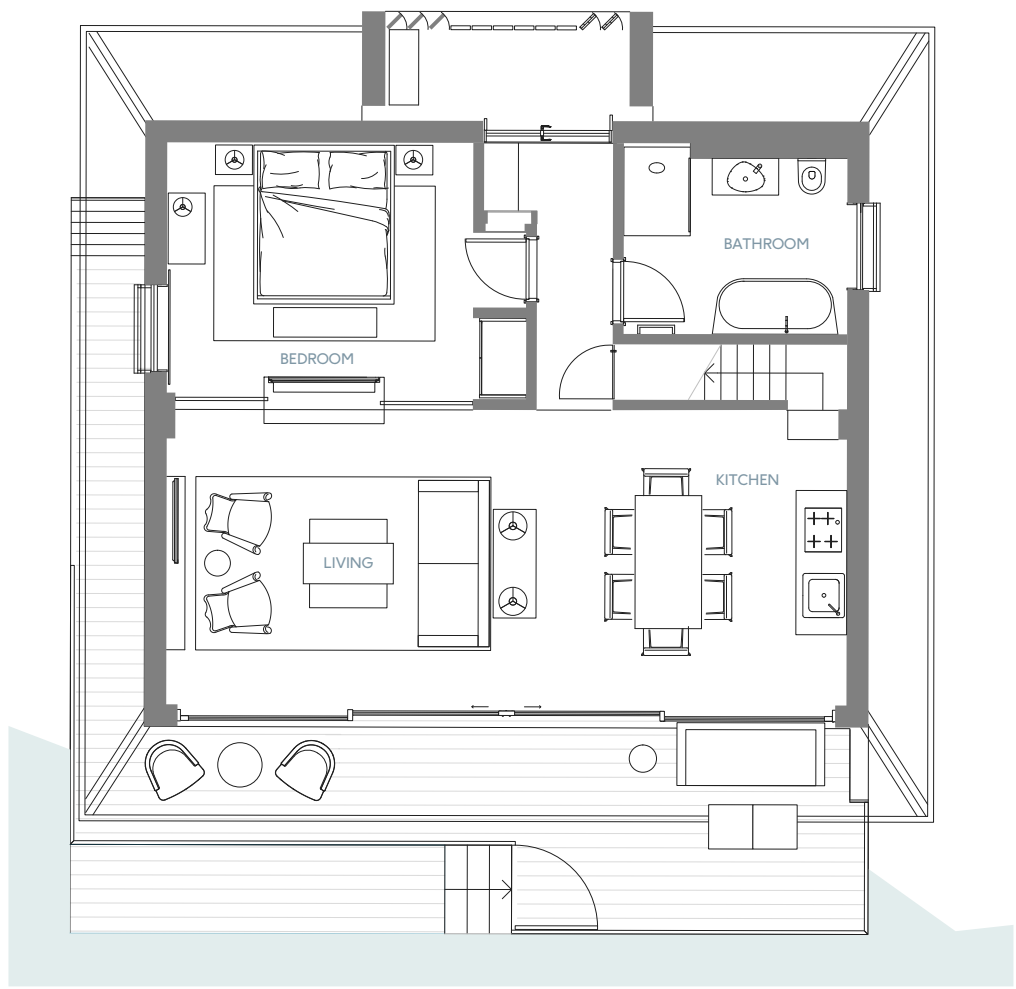


Designed with a relaxed atmosphere in mind, the open plan living space features a bespoke and convenient folding kitchenette – which can be concealed when not in use – with a wood burner that sits in front of a beautiful stone wall extending into the double height living area.

Natural materials found in the neighbouring landscape bring the outdoors in further, through the use of Cotswold stone, tonal timbers and statement pendant lighting, which are handwoven in willow by local craftsmen. Beds and mattresses are handmade in Devon using natural fibres from a sustainable resource.

The cabin has been decorated using a rich and earthy colour palette of burnt reds, chocolates and ochres. Layers of natural texture give rustic flair to this lakeside dwelling, with furnishings including deep velvet armchairs, eclectic artwork, vintage finds and a bespoke crafted dining table and chairs; finished with a 9m glazed frontage that floods the room with natural light, creating a warm and cosy environment.





Total GIA 92.79 sqm
999 sqft

GIA Ground 71.61 sqm
771 sqft



GIA Mezzanine 21.18 sqm
228 sqft



The bedroom features a luxurious four poster bed and benefits from views into the cabin's private garden. A separate mezzanine floor acts as a twin or double room and also features a secret den for your little ones underneath the gables, and a stunning view across the living space and lake.

The split level decking provides an amazing entertaining space to enjoy long summer evenings, providing easy access onto the water to enjoy a paddle around Marley Lake's shores.



ABOUT THE LAKES

Set in 850 acres of freshwater lakes, woodlands and meadows, The Lakes is a secure estate in the heart of the Cotswolds. Within easy reach of London and international transport links, it is home to 165 luxury family homes.

The estate's superlative facilities include a full-service spa, a restaurant, sailing club and a wealth of family-friendly activities from kayaking and zip-wiring. This idyllic quality of life, its location and long-standing record of capital growth, have given The Lakes an exceptional reputation amongst investors and residents.

WHO ARE YOO?

YOO is a branded lifestyle and design orientated place maker. Since 1999, YOO has worked with the world's most visionary developers to create and design residential, hotel, commercial and mixed use projects in over 36 countries throughout the UK, Asia, Australia, Europe, Africa, North and South America and the Middle East.

Co founded by John Hitchcox and celebrated designer Philippe Starck, YOO is about creating a lifestyle through amazing spaces, where people come together and create communities; spaces developed to inspire the feeling that anything is possible.



**“PROBABLY THE
BEST HOLIDAY HOME
IN THE WORLD...”**

KERRY SMITH, EDITOR,
BRITISH AIRWAYS HIGHLIFE

**“THERE’S NO BETTER
WAY TO ESCAPE THE
HECTIC CITY LIFE...”**

than spending some time in the beautiful, tranquil surroundings of The Lakes. We have, as a family, enjoyed renting at The Lakes over the years so much that we have decided to build a house here.”

WALTHER DOERNT